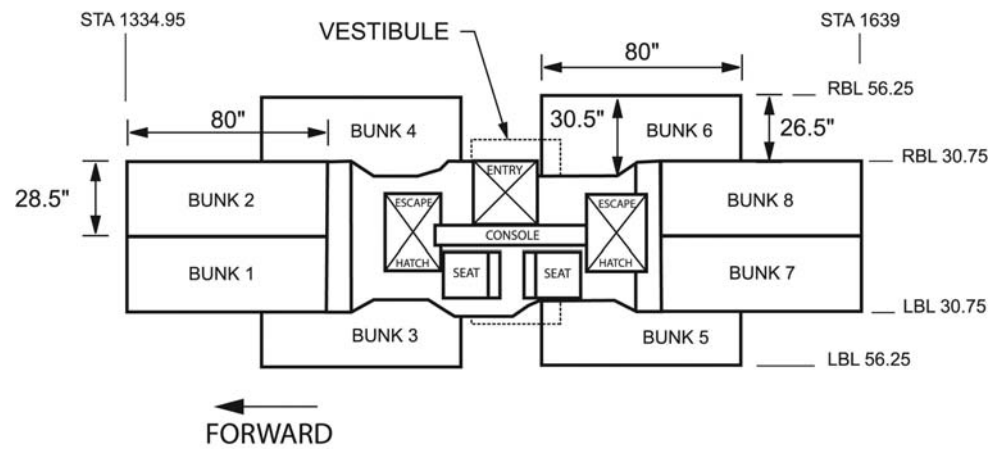


Product Ordering Information:

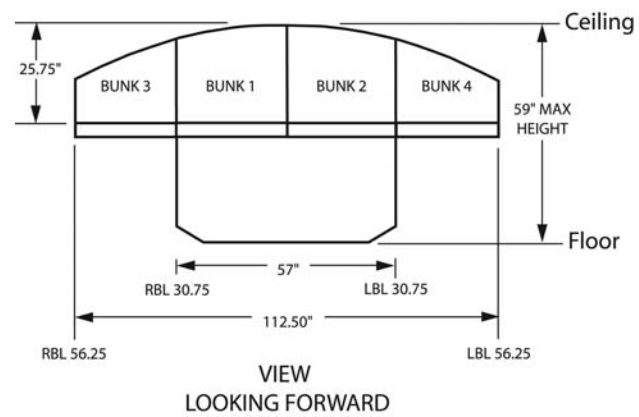
Contact: VP Advanced Products & Integration
 Phone: 360-657-5197 or 360-651-6494
 Email: fsisales@beaerospace.com

Or

Contact: Marketing Representative
 Phone: 360-657-5197 or 360-651-6499
 Email: fsisales@beaerospace.com



PLAN VIEW



VIEW
LOOKING FORWARD



ISO-9001 International Quality Management System; Certified
 AS9100 International Quality Management System; Certified
 FAA Production Certificate
 Boeing D6-82479 Quality Systems Certificate

**COMFORTABLE
 ACCOMMODATIONS FOR
 777 FLIGHT ATTENDANTS**

777 Door 3 Overhead Attendant Rest

The Overhead Attendant Rest (OHAR) is strategically engineered to take full advantage of the unused overhead volume in the mid section of the wide-body 777-200ER airplane; it provides comfortable, quiet sleeping quarters for up to 8 flight attendants with the added bonus of two in-flight seat positions.

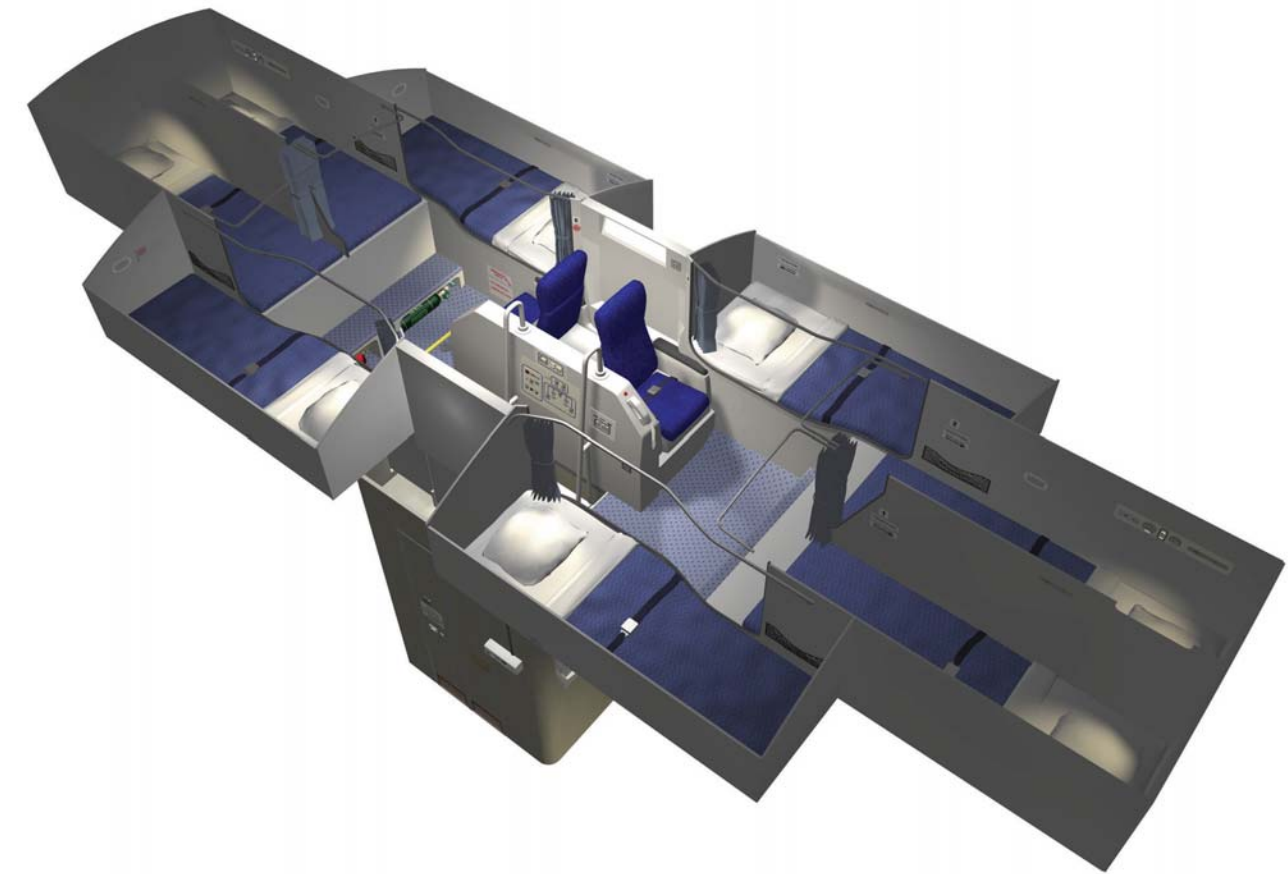
The OHAR increases cargo capacity and revenue over a lower lobe crew rest. When installed, the OHAR frees up the equivalent of one 96 x 125 inch pallet in the lower lobe and weighs less than two thirds as much as the lower lobe crew rest compartment it replaces.

The OHAR offers configuration flexibility. The OHAR is adaptable to the customer's configuration requirements.

Designed with safety in mind, the OHAR's symmetrical design provides all personnel equal access to exists and fire fighting equipment in the event of an emergency.

Emergency Escape Hatches are located both forward and aft.

The OHAR is patented (Patent 6,182,926 B1), proprietary design is certified by the USA FAA and various operators local Regulatory Authorities.



Standard Specifications:

Each Bunk Compartment includes:

- 4" (10.16 centimeters) thick, tapered mattress
- Seat belt
- Privacy curtain
- Reading light
- Distribution air
- Audio headset jack
- Adjustable air outlets
- Passenger Control Unit (PCU)
- Recessed oxygen drop
- Stowage pouch

Interior Linings:

- Honeycomb Panel Construction

Communication / Interphone includes:

- Master Control Panel is centrally located on console above stair
- Public Address Speakers
- Attendant Interphone for main deck communications located on center console
- In-Flight Entertainment (IFE): Audio can be provided to each bunk location, audio/video can be provided to each seat location (based upon Customer preference).

Emergency Equipment: (Provisions)

- Fire Extinguishers (Halon & Water)
- Oxygen Bottle
- Flashlight
- Smoke Hood
- Fire Protection Gloves
- Other equipment as defined
- Two Emergency Escape Hatches for easy access to main cabin

Smoke Detection:

- Consists of four ionization type smoke detectors and lighted visual warnings, along with audible warnings.

Environmental Control System (ECS):

This system comes standard with separate climate control areas; one in seating area and one in each bunk. Temperature is controlled by a digital temperature selector accurate within + / - degree Fahrenheit and + / - degrees Celsius, from 65-85 degrees Fahrenheit or 10-29 degrees Celsius, supplying approximately 150 CFM of fresh air.



Area Lighting:

- 115 VAC fluorescent area lights
- Two lights in the OFCR common area and one in the vestibule
- Bright and Dim Modes
- Aisle Night Lighting: Aisle lights installed in Overhead Flight Crew Rest and in vestibule, incandescent located under each stair tread.
- LED Reading lights are located at bunks and seats

Emergency Lighting:

- Three illuminated exit signs
- Four battery powered emergency lights, includes one emergency light in the vestibule
- Non-illuminated secondary emergency escape placard

Lighted Passenger Information Signs:

- Four No Smoking & Fasten Seat Belt Signs
- Two Decompression / Smoke Warning Indicators

One 115 VAC Service Outlet:

- For use by ground cleaning crews only. Not powered in-flight.

PC Power

- Available upon request.

The Standard Entry Vestibule occupies the same footprint as the entry vestibule for the lower lobe, the main deck monument or closet if there is no crew rest on the aircraft. The advantage of the OHAR is its installation flexibility. Located in the vicinity of the 777 Dr 3, OHAR is designed to adapt to the Customer's requirements and meets most Customer configuration needs. The main deck access is from the right or aisle side of the aircraft.

The Standard Entry Vestibule contains a vanity mirror, light and coat closet with rod or stowage when space permits. Under stair lighting is also included.

Other Entry Vestibule features may include a sink, emergency equipment and bag storage. (Some of these features are dependent upon Customer's configuration and preference).

